

# Agatha's Garden

KATHY HALL



Afternoon Tea Quilt  
designed by  
**Janet Houts**

Quilt Size: 74" x 74"

[andoverfabrics.com](http://andoverfabrics.com)

## About Agatha's Garden

Text here. – Designer name

andover

•  
•  
• [makower.uk](http://makower.uk)  
•

Free Pattern Download Available

1384 Broadway New York, NY 10018  
Tel. (800) 223-5678 • [andoverfabrics.com](http://andoverfabrics.com)





9316-B



\*9316-R 2½ yds



9317-BL



\*\*9317-RL 4¾ yds (backing)



9318-B ¾ yd



9318-BL 1 yd



9318-R ¾ yd



9318-RL 1 yd



9320-B Fat ¼ yd



9320-BG



9320-R Fat ¼ yd



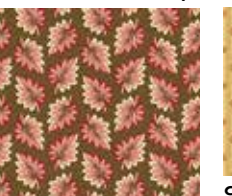
9320-RN Fat ¼ yd



9319-B Fat ¼ yd



9319-BN Fat ¼ yd



9319-RN Fat ¼ yd



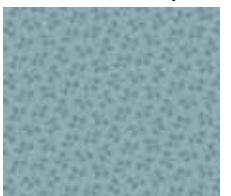
9321-BN ¾ yd (includes binding)



9321-RE Fat ¼ yd



9321-RN ⅝ yd



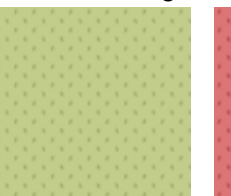
9322-B Fat ¼ yd



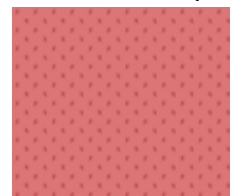
9322-BG



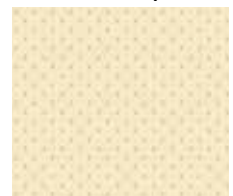
9322-RE



9314-BG



9314-R Fat ¼ yd



9314-RL 1¾ yds

| FABRIC    | 5 KITS  | 10 KITS | 20 KITS |
|-----------|---------|---------|---------|
| 9316-R    | 1       | 2       | 4       |
| 9314-RL   | 1       | 2       | 3       |
| FROM EACH | 1       | 1       | 2       |
| 9318-BL   | 9318-RL |         |         |
| FROM EACH | 1       | 1       | 1       |
| 9314-R    | 9318-B  | 9318-R  | 9319-B  |
| 9319-BN   | 9319-RN | 9320-B  | 9320-R  |
| 9320-RN   | 9321-BN | 9321-RE | 9321-RN |
| 9322-B    |         |         |         |

| BACKING |   |   |   |
|---------|---|---|---|
| 9317-RL | 2 | 4 | 7 |

Yardage needed for backing:  
4¾ YDS per kit

\*Note: 2½ yds Blue 9316-B are required for the alternate quilt.

\*\*9317-BL is used for backing for the alternate quilt.

Bolts needed to cut project kits.  
15 yds = 1 bolt

Fabrics shown are 25% of actual size.  
Fabrics used in quilt pattern are shown in black.

**Agatha's Garden**  
KATHY HALL

andover : makower uk